

Open-space



禅意东方

——居住空间 ④

Feel the Eastern Zen Style
— Living Space

凤凰出版传媒集团 | 凤凰空间
江苏人民出版社 | IFENGSPACE

地址：天津市南开区白堤路240号科园科贸大厦

传真：86-22-60266199

电话：86-22-60262226/60262227/60262228 (总机)

86-22-60266193 (直线)

E-mail: 87896633@163.com

http://www.ifengspace.cn

上架建议 建筑 / 室内设计

定价：328.00元 (USD72.99)



禅意东方

Feel the Eastern Zen Style
——居住空间 Living Space

④

凤凰出版传媒集团 | 凤凰空间
江苏人民出版社 | IFENGSPACE

禅意东方



禅意东方

——居住空间 ④

欧朋文化 黄滢 马勇 主编

凤凰出版传媒集团 | 凤凰空间
江苏人民出版社 | IFENGSPACE

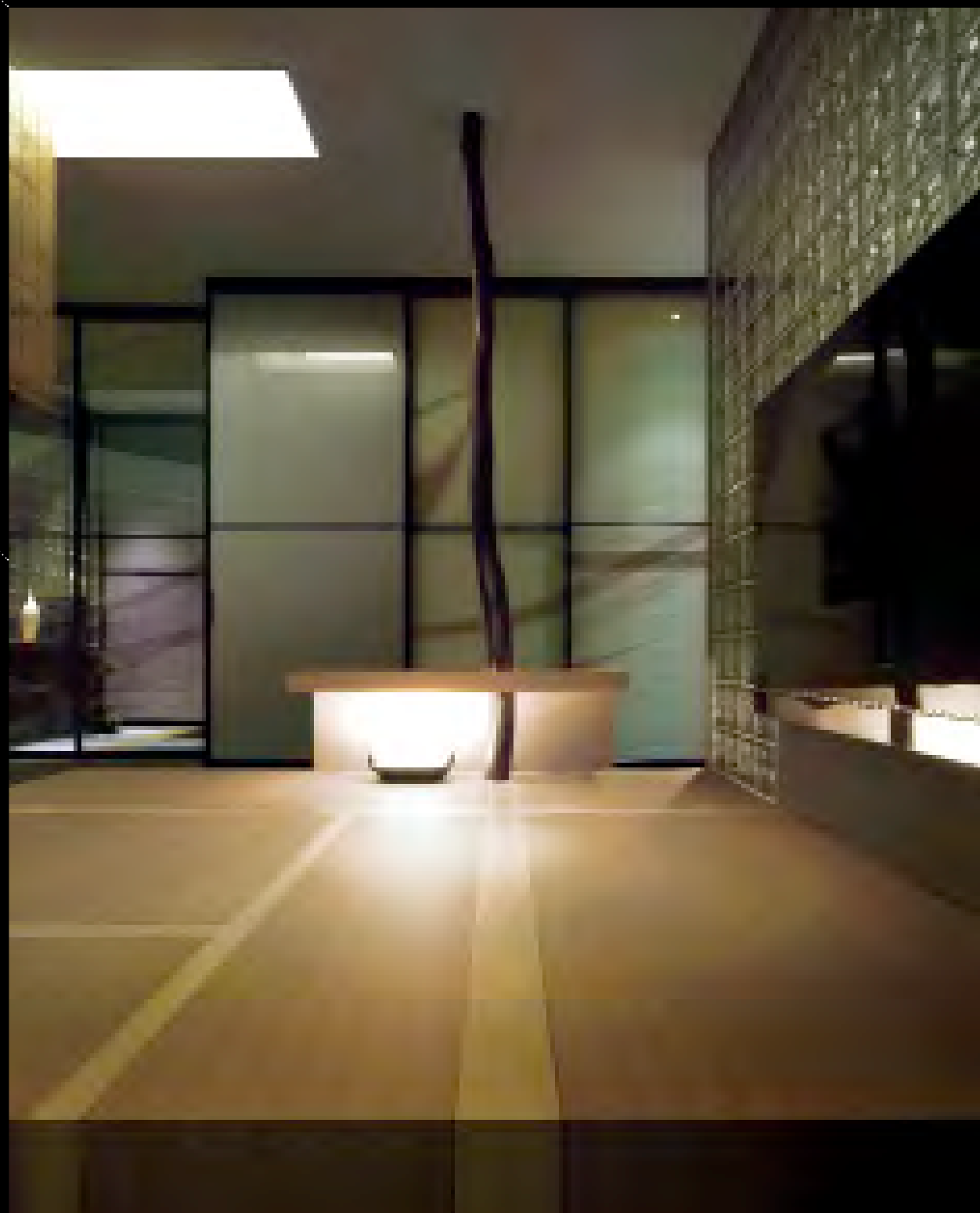


Feel the Eastern Zen Style — Living Space

诗意的情感，简约的气质 Poetic Emotion, Simple Temperament

项目名称：日本静冈第一塔宅
设计公司：
Lipparini 设计工作室
设计师：毛罗

Project Name: The First Tower
in Shizuoka
Design Company: Lipparini
Studio
Designer: Mauro Lipparini



诗意的情感、简约的量体气质共同打造了一个放松、动感、清冷的气氛。传统的榻榻米房间得以重新解读，家居生活成了本案设计的重中之重。毛罗运用创新的结构设计将传统封闭、隐居式的空间改为开放的姿态，仿佛一个欢乐的平台，既亲密又扩张。

传统榻榻米的三维融以现代的材质，加上当代的动人技艺，打造着一个全新的空间。地板上的平行线绘彰显着与众不同的榻榻米空间：既有木质的传统古典，又有石材的仓冷叛逆。

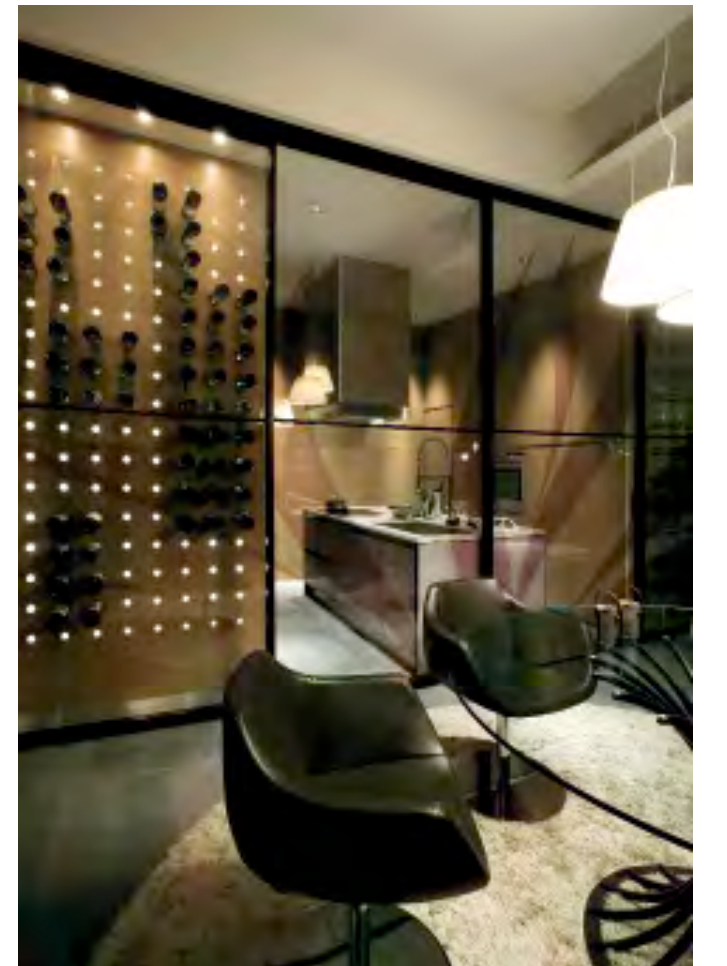
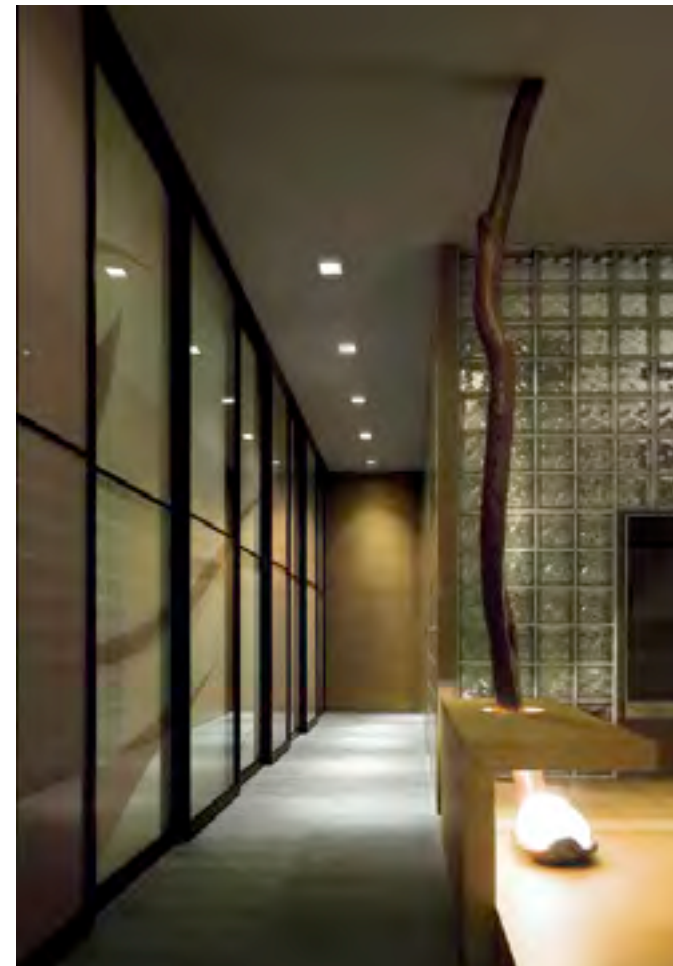
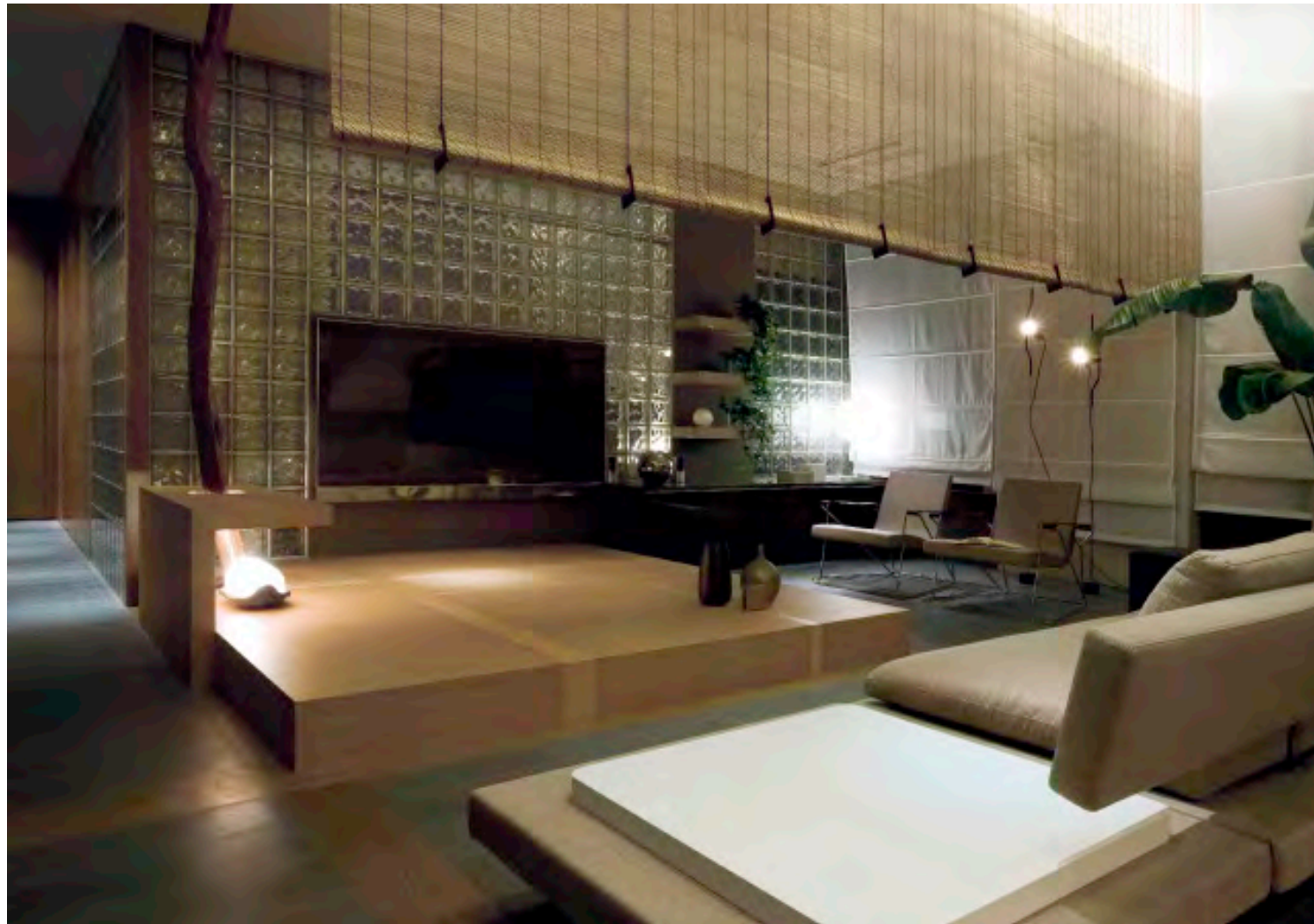
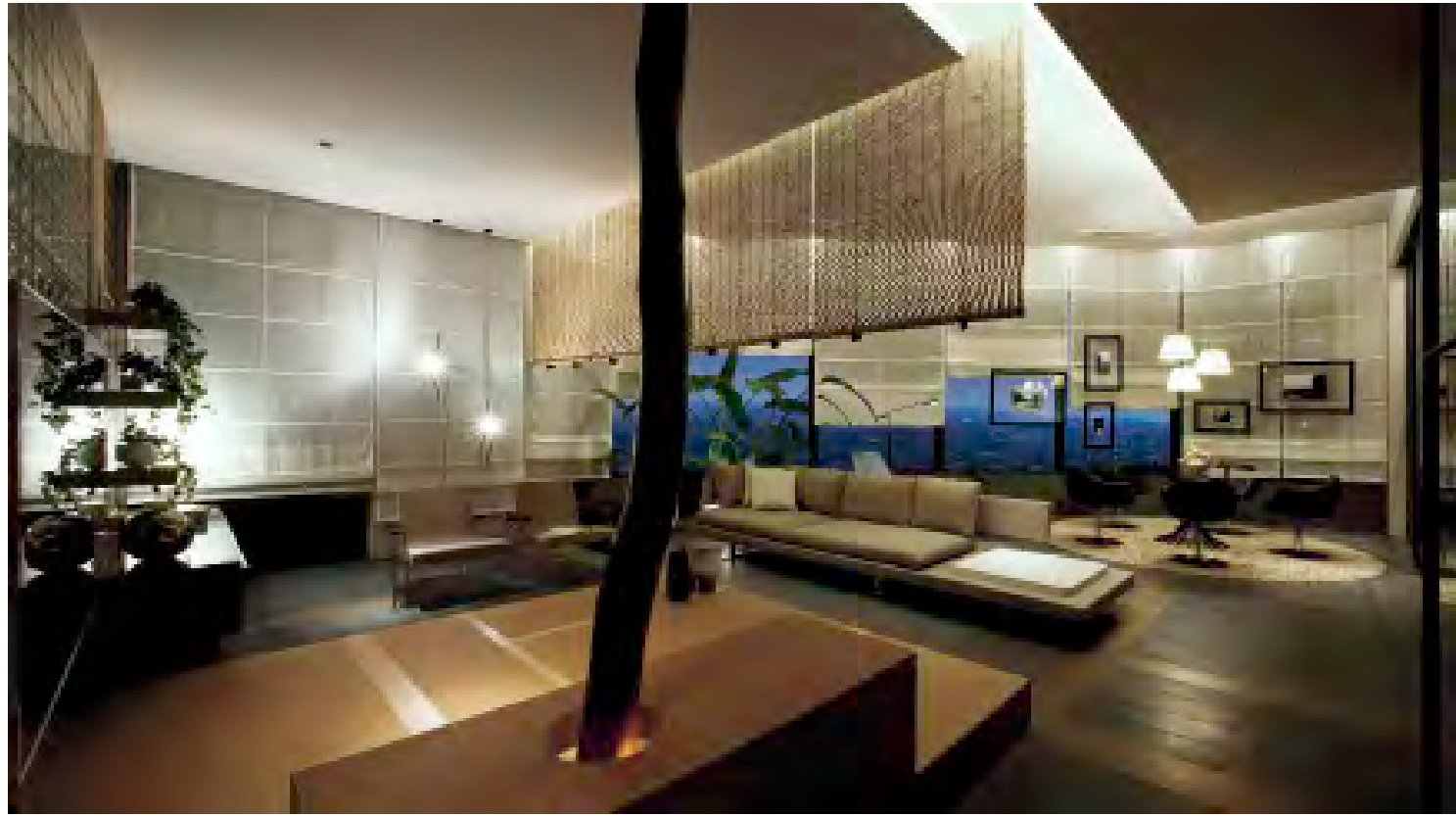
各功能房间相互独立，但又传承着日式建筑的精髓。丝绸的屏风、透明的玻璃推拉门、玻璃砖墙、传统的竹制百叶窗悄悄地透露着别致、含蓄的日本风情及设计师毛罗的聪明才智。家具铺陈由毛罗亲手设计，意大利品牌家具生产商 Misura Emme 承制。

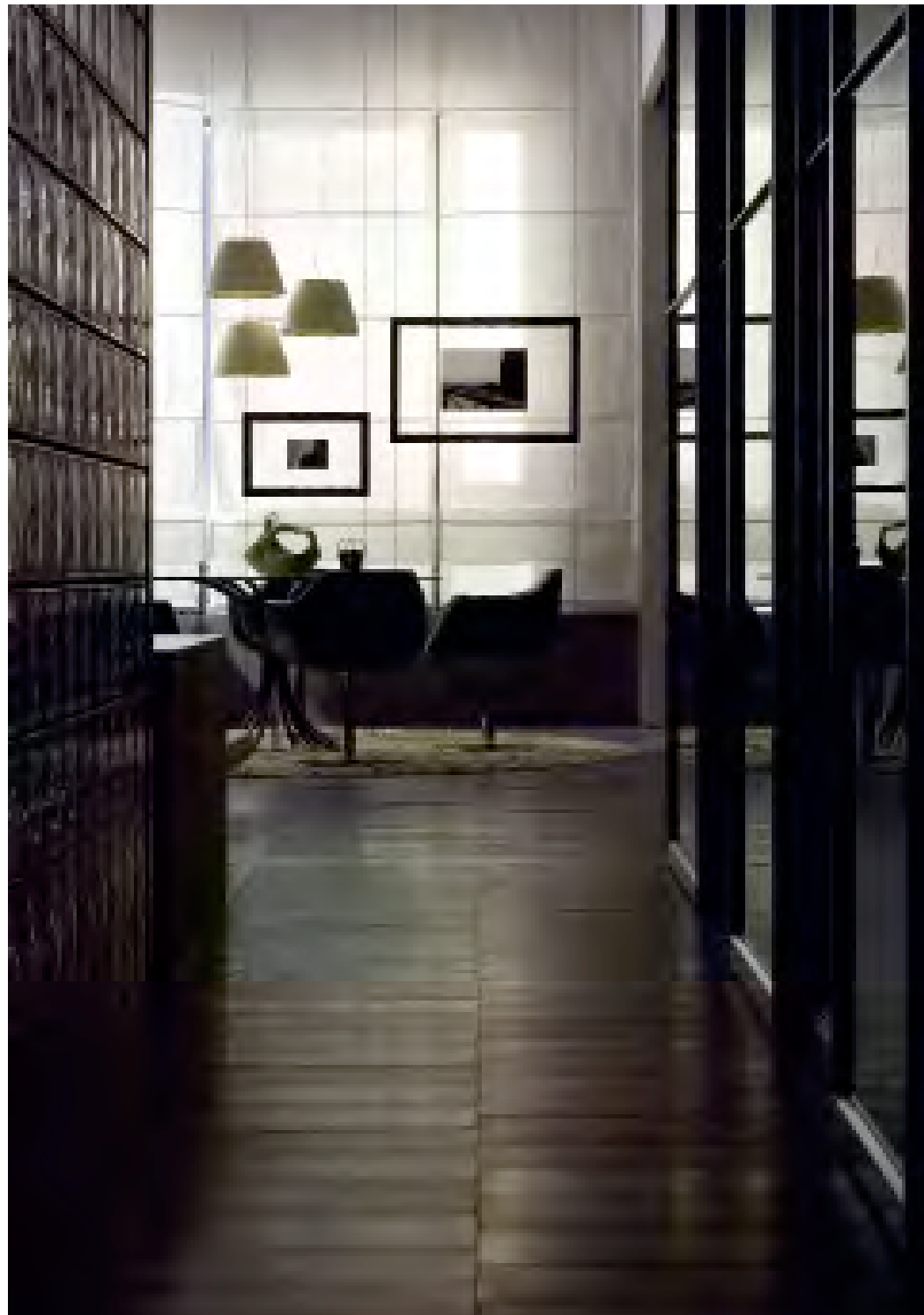
Poetic feelings and a simple temperament have created this model apartment's relaxing, yet dynamic set design and sober atmosphere. The focus point of the project is the reinterpretation of the traditional tatami room: home life is the most important. Lipparini has reinterpreted the traditionally closed, secluded environment of the tatami room as an open space. His new, innovative configuration of the tatami room transforms it into a stage, as if a convivial platform, both intimate and dilated.

Lipparini's reinterpretation of the tatami room, both in terms of dimensions and materials, highlights his sensitive interpretation of contemporary techniques and creates a brand new space. The macroscopic parallel lines on the floor accent the tatami room reinterpreted with new materials: traditional wood and cool stone.

The various rooms of the house, in keeping with the finest Japanese architectural style, are separated, yet reinterpreted with unexpected solutions: silk screen, transparent sliding glass doors, glass brick walls, and traditional bamboo roll-up blinds, showing the unique, implicit Japanese traditions and the wisdom of Lipparini. All of the furniture has been designed by Mauro Lipparini and manufactured by the leading Italian furniture brand, Misura Emme.



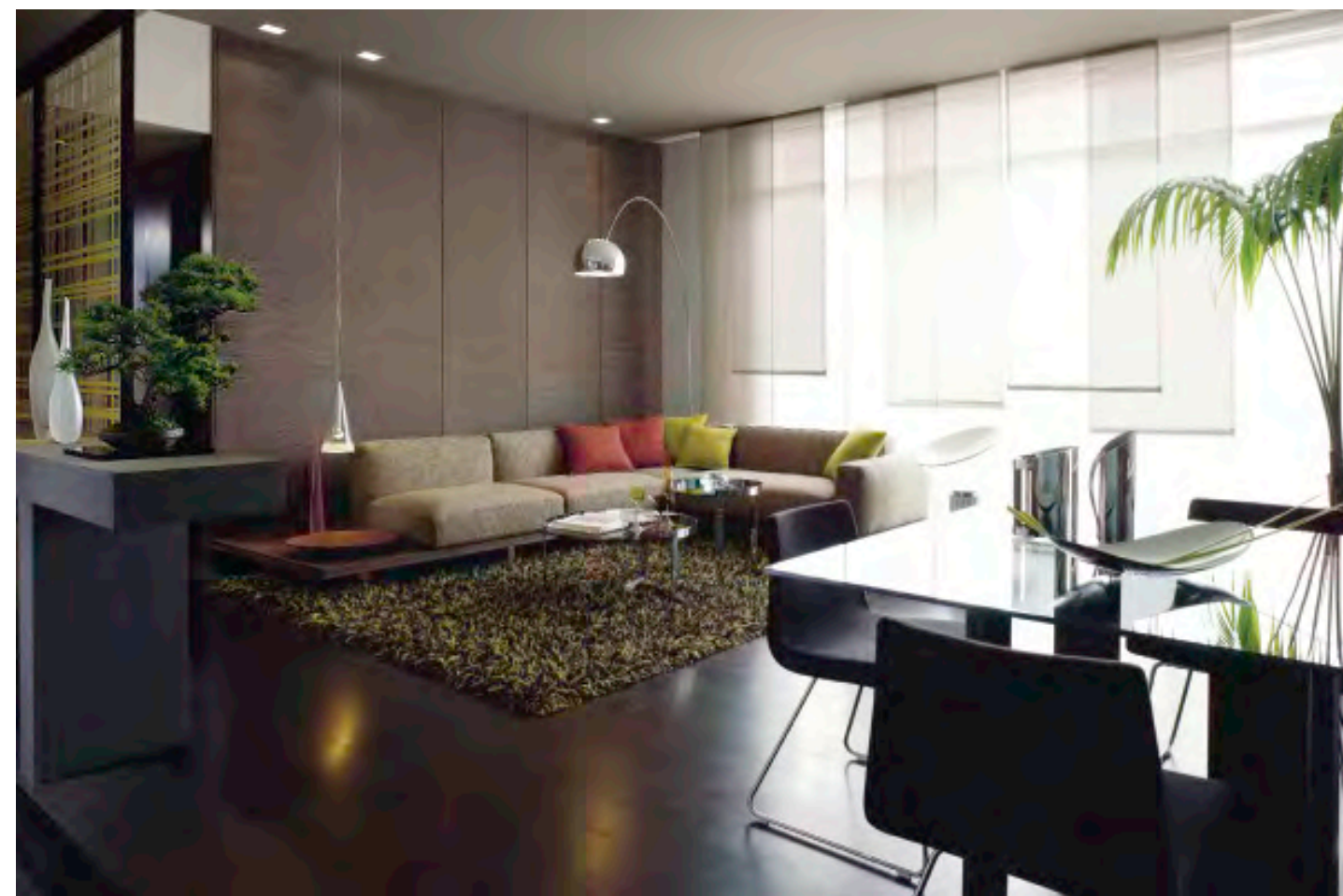
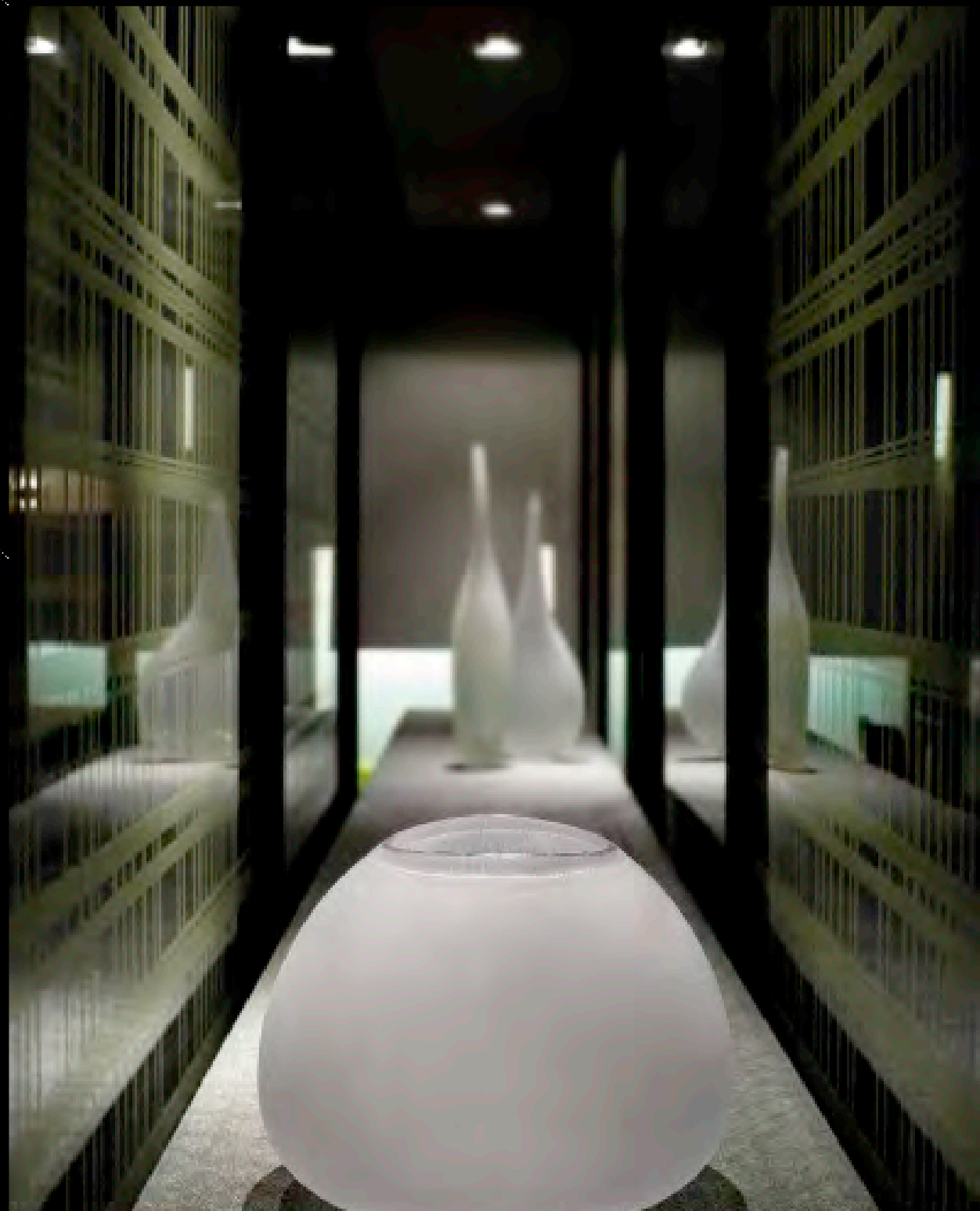


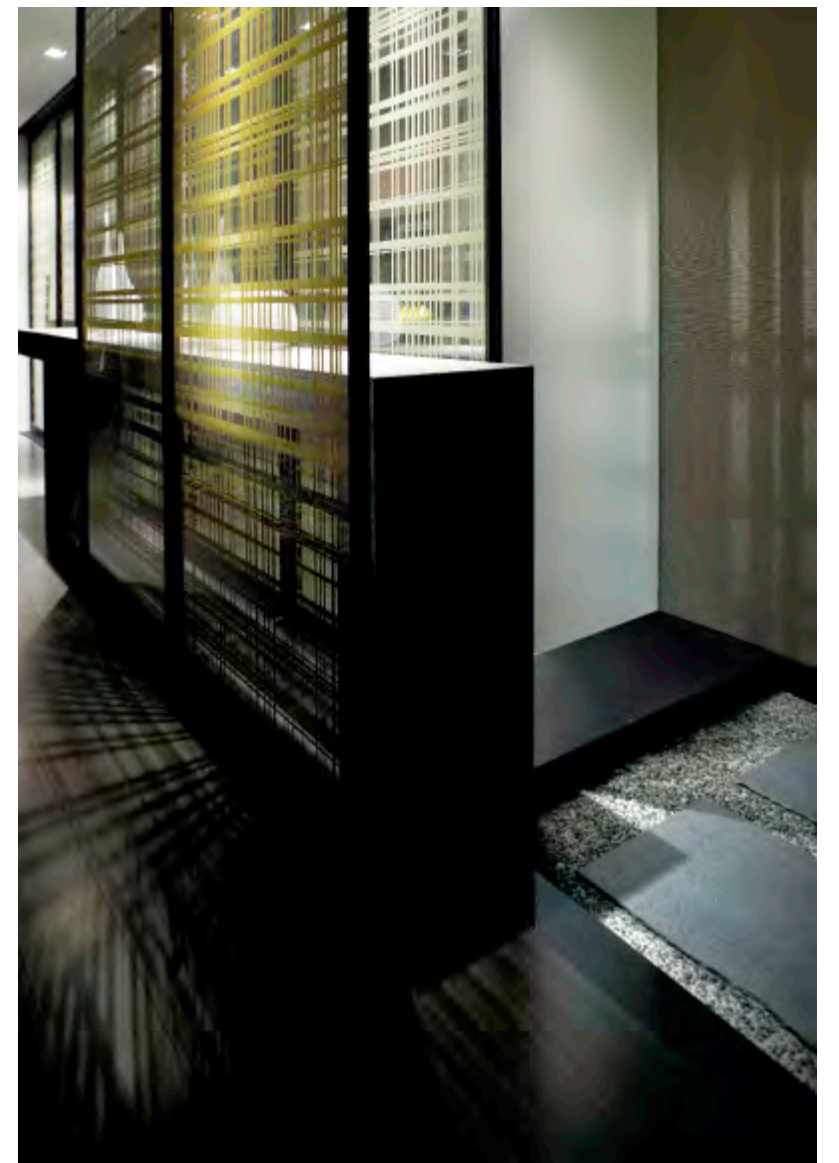
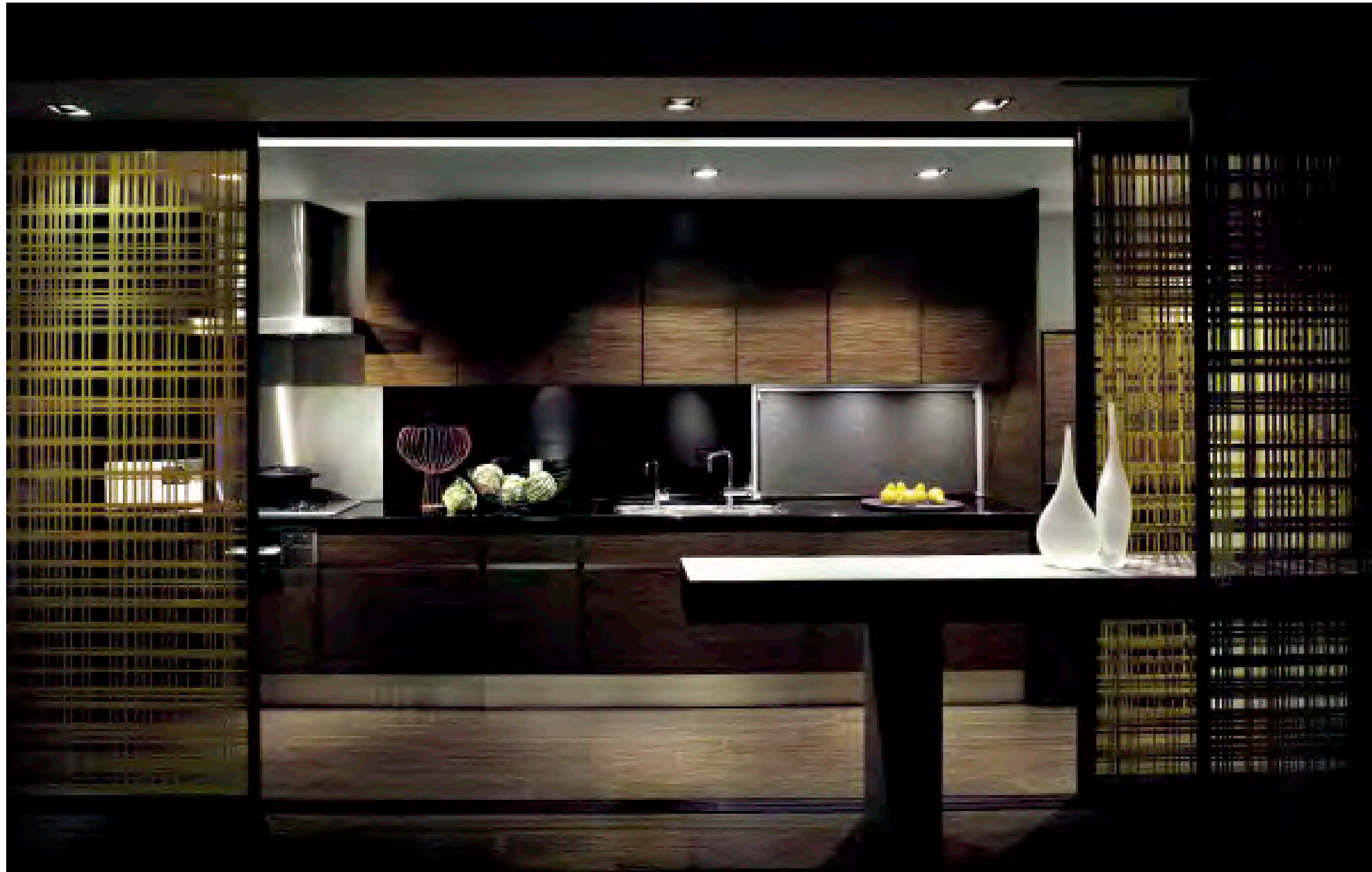


在线条中游走 于混沌中归于沉静
Walk in the Line, Back to Quiet from Chaos

项目名称: 日本世田谷苑
设计公司:
Lipparini 设计工作室
设计师: 毛罗
面积: 125.4m²

Project Name: Residence
Todoroki - Ku in Japan
Design Company: Lipparini
Studio
Designer: Mauro Lipparini
Size: 125.4m²





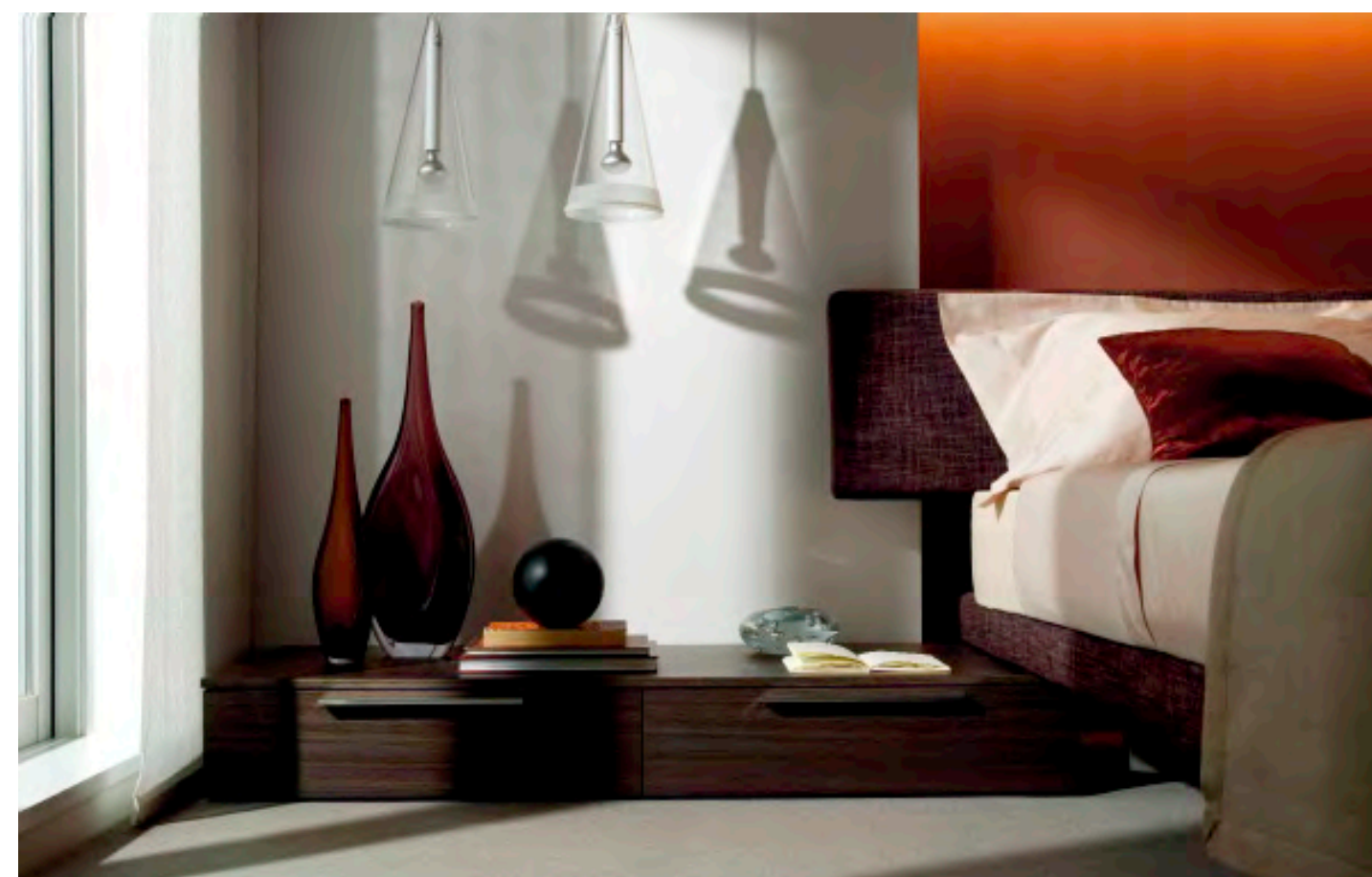
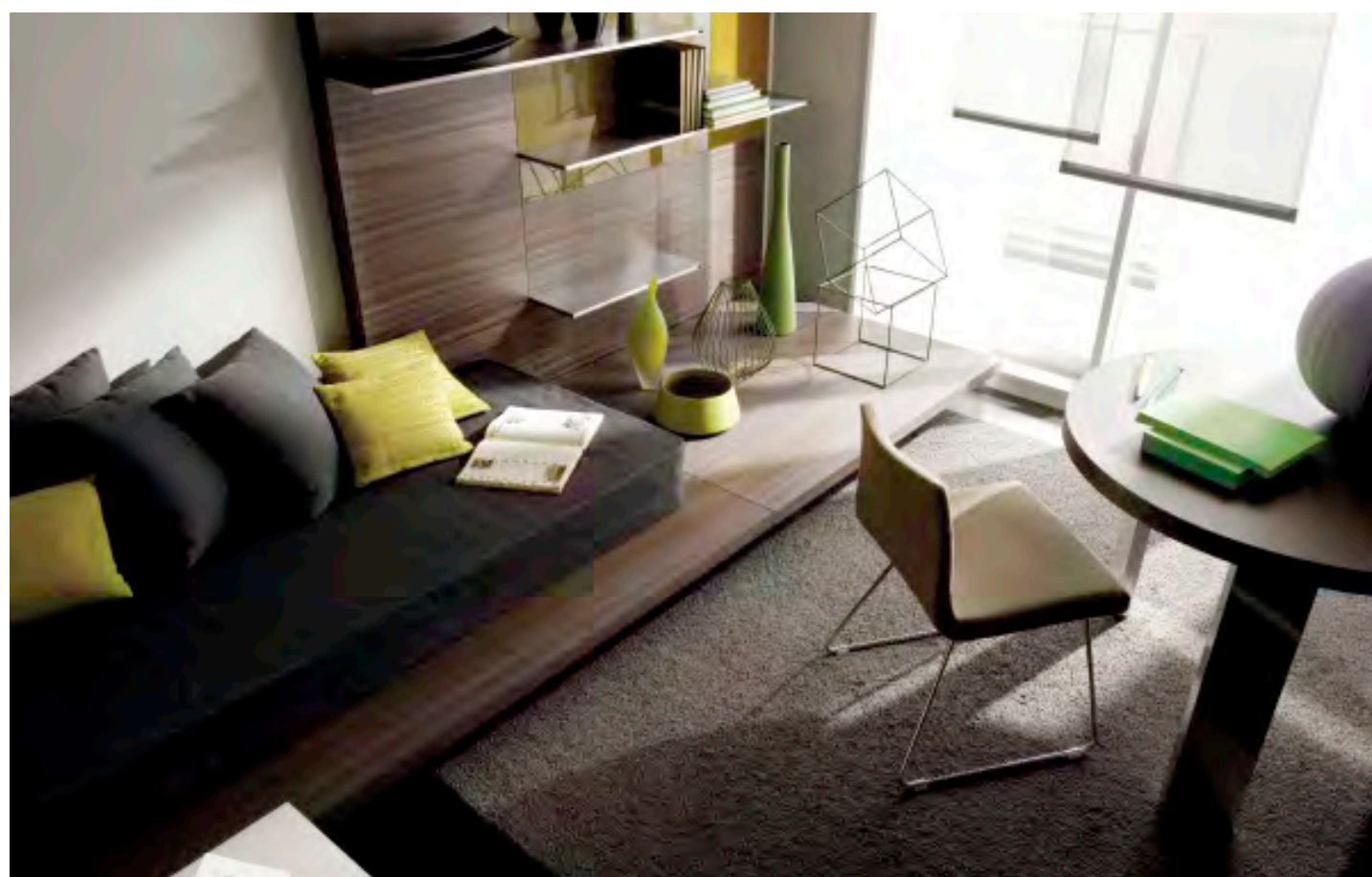
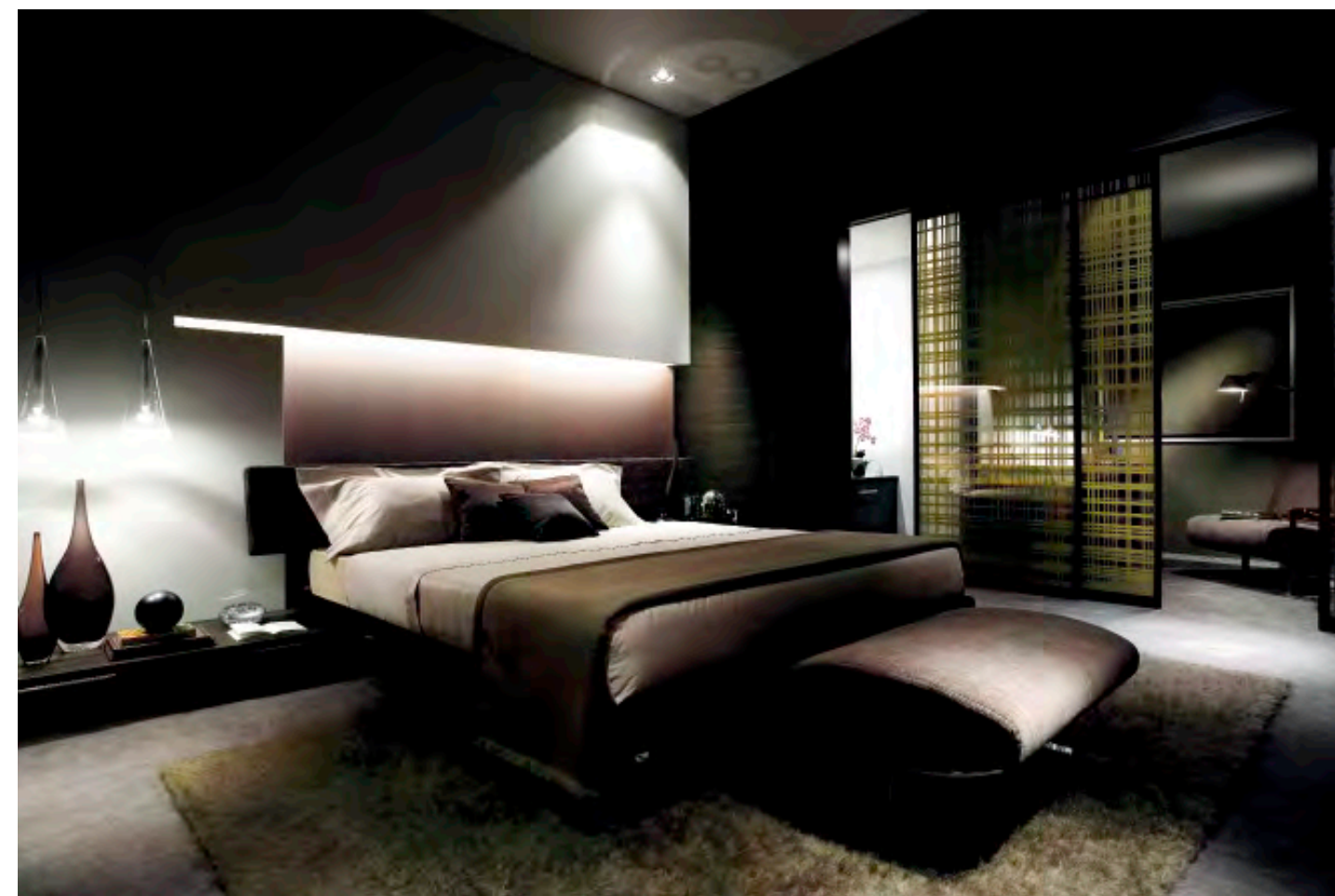


本案占地 125.4 ，位于东京世田谷区，定位于公寓样板房。但与日本传统的样板房大有差别，该空间主打玄关特色。日本传统纸糊木框令人惊奇地架构整个内里空间，公寓样板房原来也可以如此充实有力。

鸡肋一般的玄关在此演绎成关键部位：20 米左右的锦屏，定制玻璃推拉门由意大利著名家具制造商 Misura Emme 承制。样样精品，工艺精湛。普通平凡的苇编、纸艺如插花般呈现艺术的典雅与魅力。日本传统纸糊木框的巧妙运用连接卧室、客厅，整个空间统一紧密。长长的横梁架起悬挂墙板的龙骨，一如简约、低调的日本传统歌舞伎剧院。长长的半透明的玻璃框架引起厨房与客厅之间的对话，在客厅之中可以尽情欣赏正对面厨房里的厨艺表演。家具铺陈由毛罗亲手设计，意大利品牌家具生产商 Misura Emme 承制。

The “Todoroki-Ku” model apartment, covering an area of 125.4 ，located in the Setagaya-ku District of Tokyo features the hallway, not as an empty space, but actually highlights its qualities by means of the traditional Japanese “Shoji” screens which have been transformed into the theatrical “backbone” of the entire apartment, making it rich and powerful.

The hallway which is normally considered as “wasted space” becomes the pivotal piece of the project. Roughly 20 meters of silk screen, sliding glass doors (custom-made by the famous Italian furniture manufacturer Misura Emme) are all of fine workmanship. Common reed knitting and paper art show the artistic elegance and charm according to the art of Ikebana. Lipparini’ s contemporary reinterpretation of the ancient Japanese Shoji, form theatrical “wings” that unite the master bedroom and living room, making the whole space united closely. The long backbone passes through the suspended wallboard, imitating the simple and low-key Kabuki Theater. The living room faces the kitchen and you can appreciate the cooking show thanks to the long, semi-transparent glass Shoji. All of the furnishings have been designed by Mauro Lipparini and manufactured by Misura Emme.



自由语境 优雅住宅

Free Context, Elegant Residence

项目名称: 宫帕加尼宫
设计公司:
Lipparini 设计工作室
设计师: 毛罗
摄影师: 科西莫



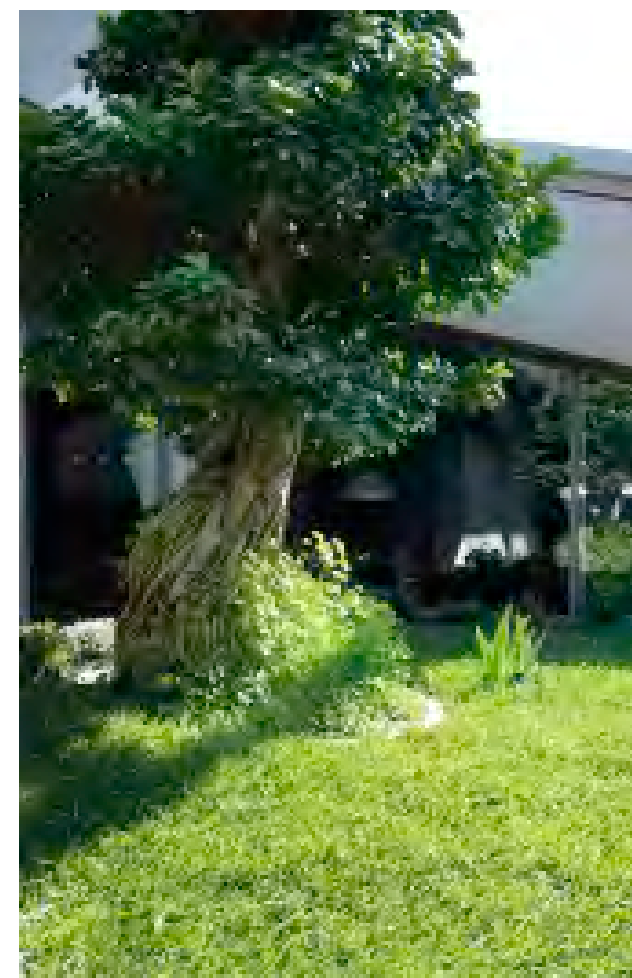
Project Name:
Pagani Nefetti Palace
Design Company:
Lipparini Studio
Designer: Mauro Lipparini
Photographer: Cosimo Lipparini

空间的自由结构，自然物语同样可以协同铸就优雅的住宅。

本案毗邻小镇，独居山坡。二十世纪初期完成的建筑量体，颇具意大利托斯卡纳乡村风情。经由Lipparini设计工作室倾情打造，古老的建筑实现了华丽转身，一个拥有现代装饰的空间，犹如一位轻纱缭绕的美女，悄悄地随着自然风光轻轻舞至世人面前。旖旎的自然风光，独赋的外部景观恰如少女的脸庞，含羞欲笑。

简单的设计手法，单纯的墙体隔断，竟然一反常规地让空间有了延伸的感觉。斜面的恰当运用延续了空间的整体统一，视线更加流畅。但各层空间并不仅仅简单地联系，结构的美、雕塑般的质感使空间顿时丰富、独具韵味。真乃虚实相映，光亮与黯淡形成了完善的对比。不同材料、各式的形状彰显着活力、纯洁与大气。光滑的石壁由不同尺寸的石材铸成，纹理清晰，尽显纹路质感。适当的开口处理，创造着恰如其分的明暗效果。不远处一面同样光洁的墙壁，丝绸质感、釉烧玻璃材质。强烈的对比中流淌着沉静、大气，低调、奢华。一块巨大的钟乳石造型由天花悬挂而下，一面乌木墙加入了空间的对话。刹那间，各种元素对比产生的硬朗感消于无形中。客厅中，两窗之间，壁炉而立，形成了空间的焦点。室内的温暖，室外的绿色，两相呢喃、两相情。

建筑量体水平走向，新加的不锈钢材质矩形架无缝对接着墙体，浑然天成。内里铺陈在空间里映照，但壁炉固有的功能、形象却得以重新定位。诸种设计，其实是设计师毛罗设计思想的极好印证。黑铁木的地板，明代的中式的桌椅，三十年代的Osvaldo Borsani家俱，和二十世纪初Venini亲手设计的灯具，彰显着空间的古色古香。Saporiti等大师设计的品牌家俱、灯具却又尽显着空间的现代气息。端庄与典雅，现代与浪漫，齐力合奏的乐曲，正悄悄地在空间响起。





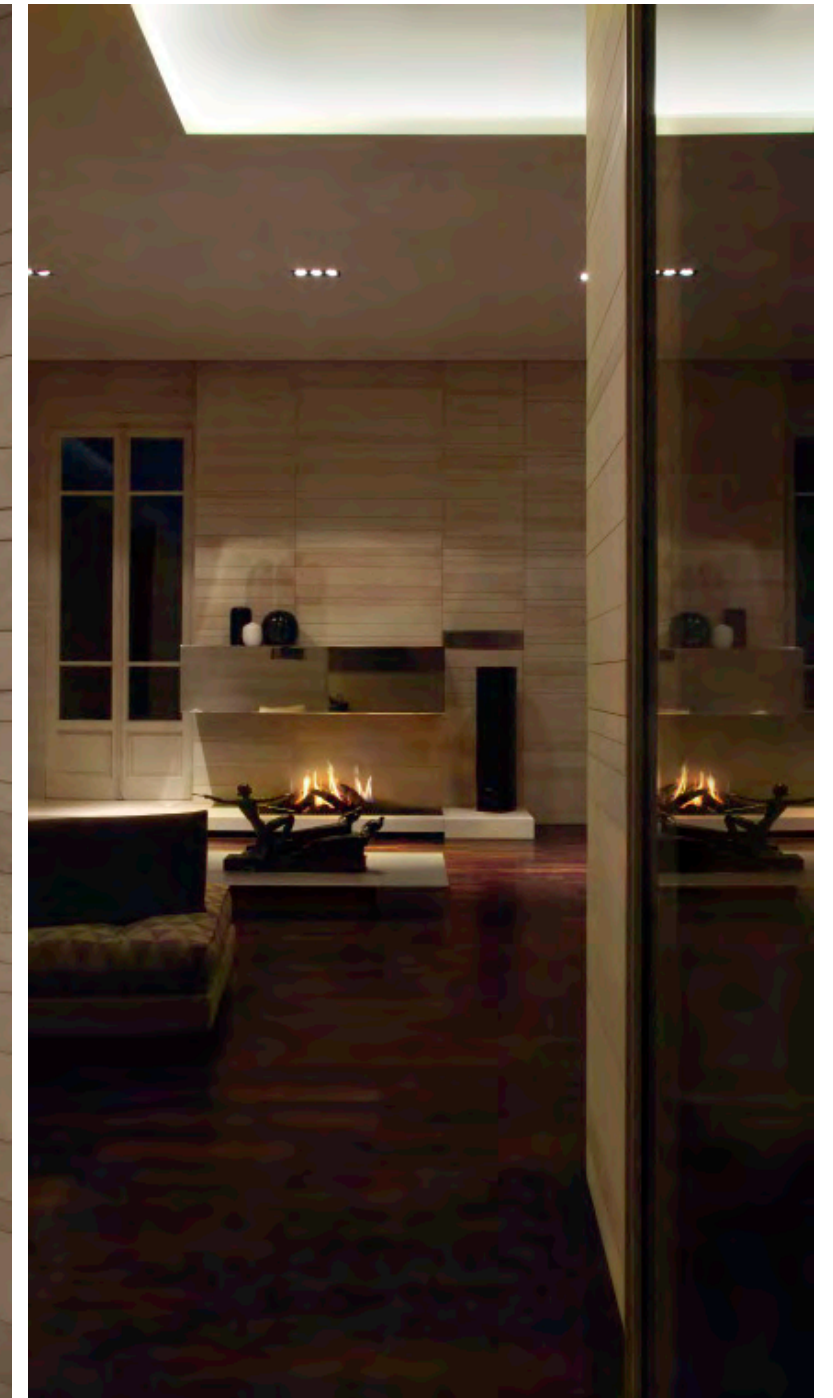
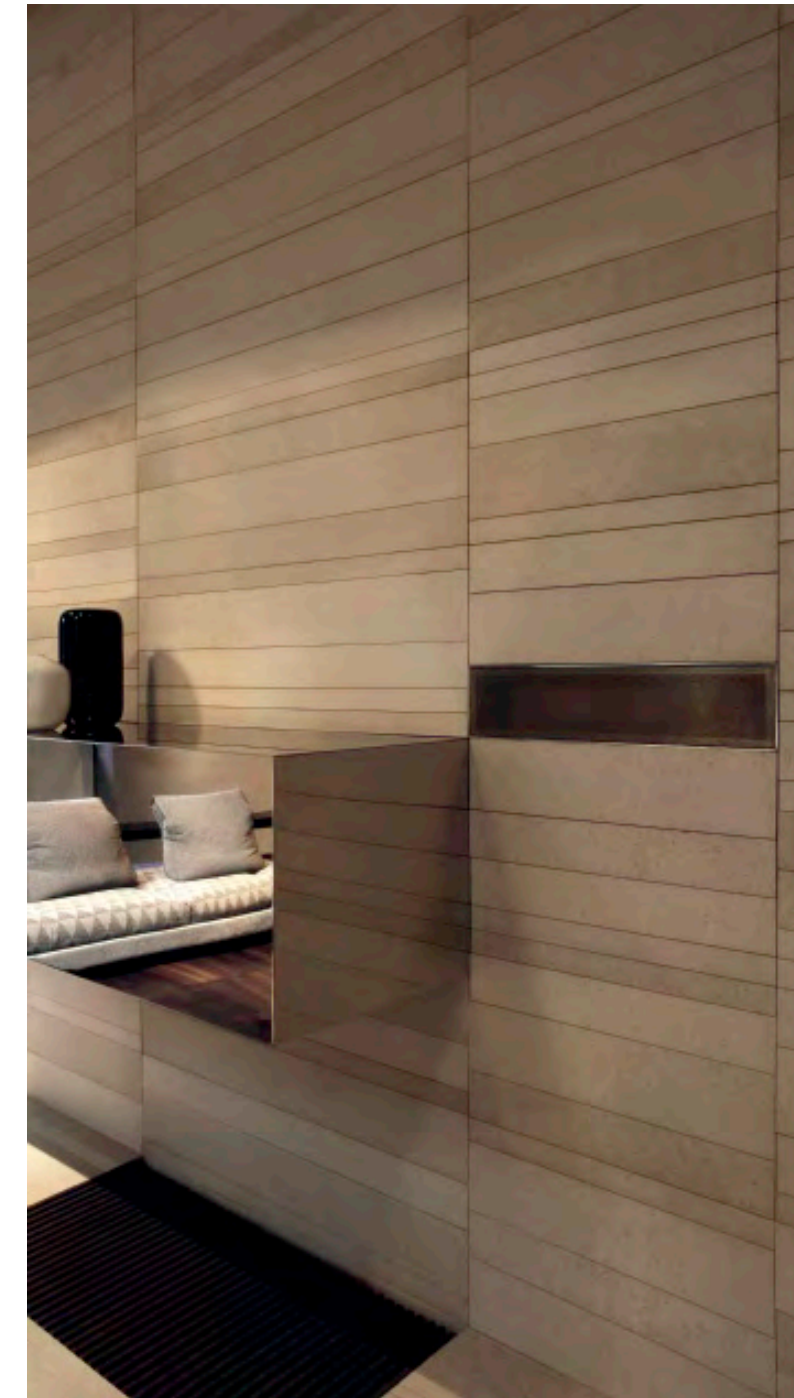
Substantial and elegant residence takes structural suggestions from the free space characterizing the surrounding nature.

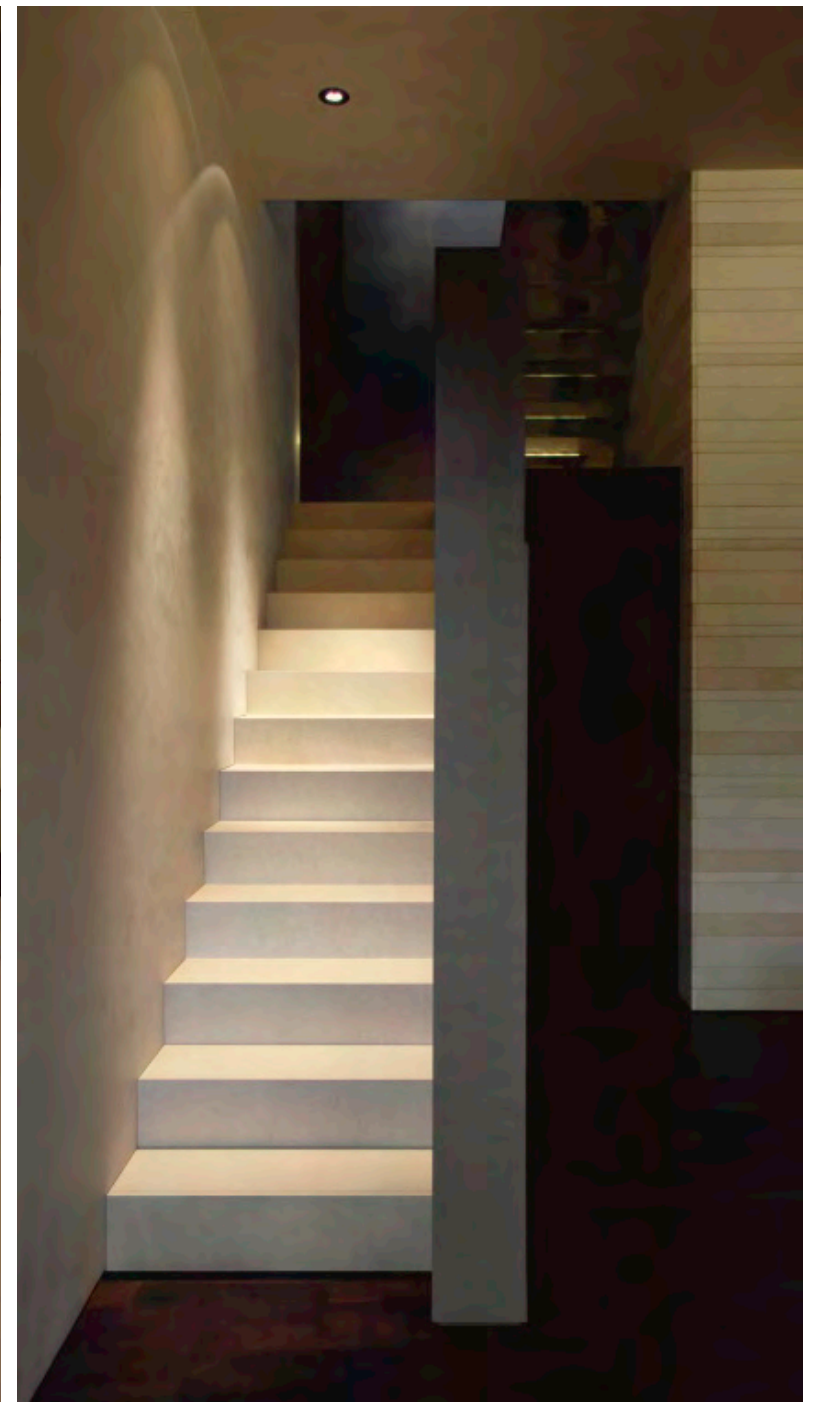
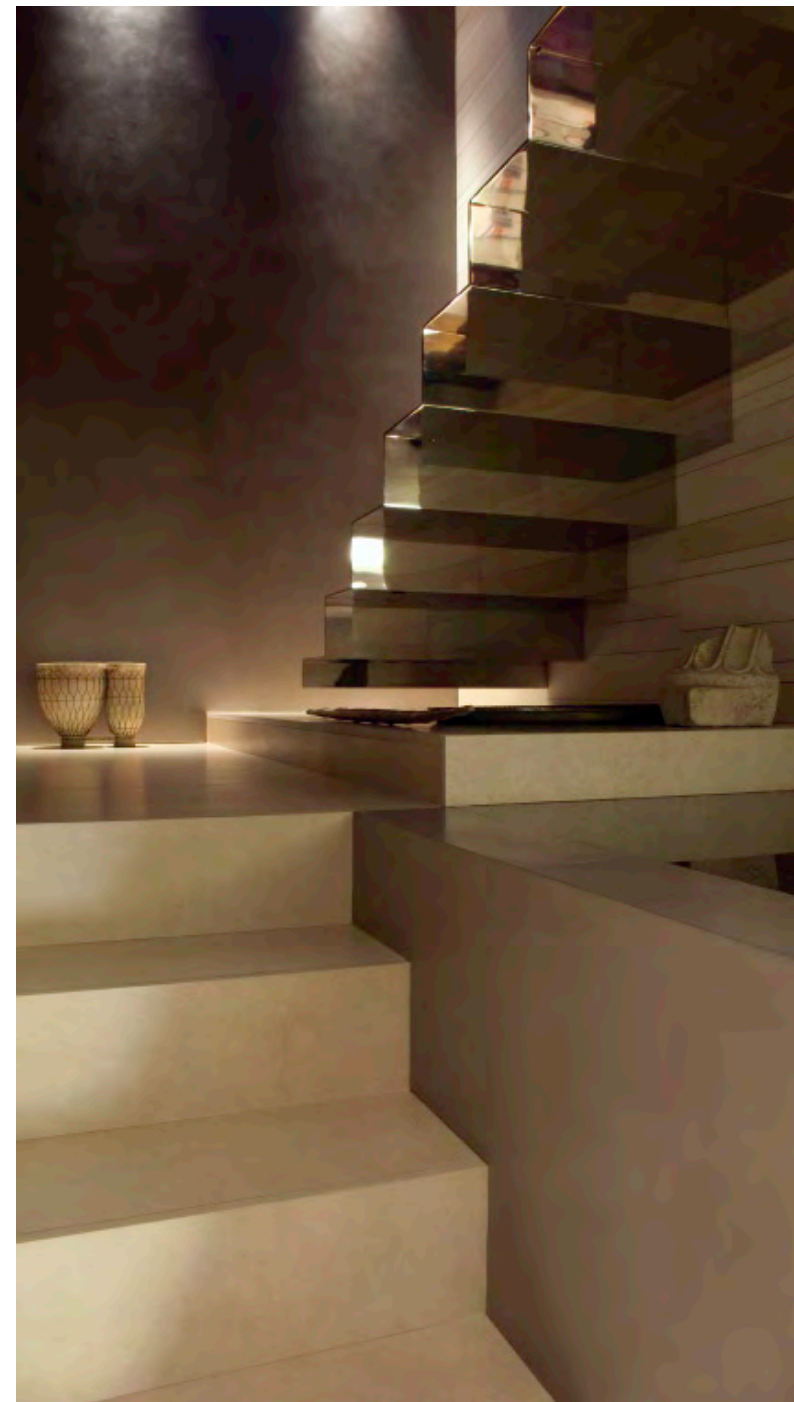
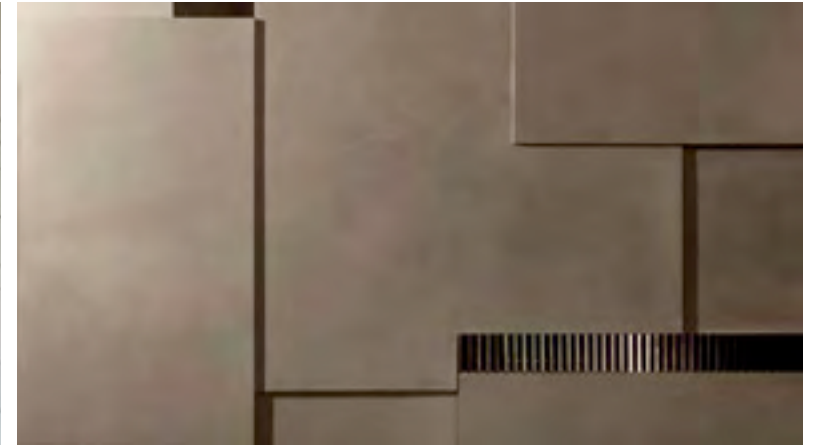
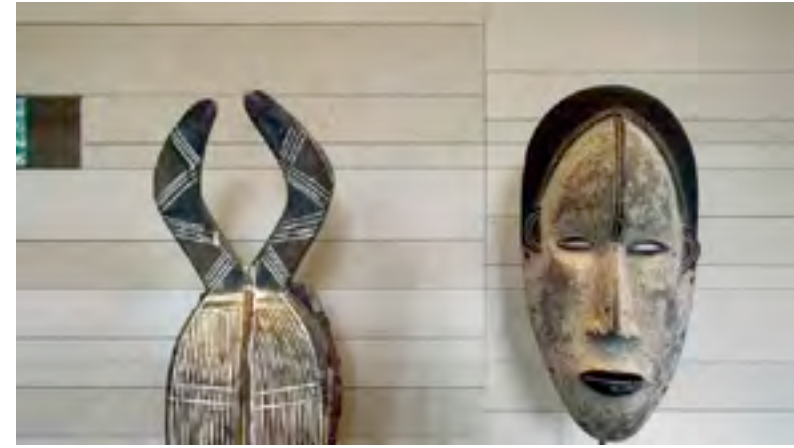
Pagani Nefetti Palace is located on the slopes of the hills near the town. The residence realized by Lipparini Studio is about a part of this beautiful villa built in the early 20th century and distinguished by the beautiful landscape of Tuscany countryside. The mix of ancient structure and contemporary interiors creates a house, which is not looking for stylistic consistency but combines tradition and modernity with unique elegance. The natural background given to the project is the outstanding external landscape.

Mauro Lipparini amplified the internal spaces through the utter simplification of architectural shapes such as walls and theatrical side scenes dilating the space rather than dividing it. The space becomes continuous and fluid as highlighted by the ramps. These not only connect one floor to another but also boast a structural scenic and sculptural presence. The walls play with the contrasts of plenums and voids, light and dark, shiny and matt surfaces. The careful and scrupulous use of different materials and shapes suggests vigor, purity and magnificence. The

stone walls made of slabs of different dimensions with clear textures fit together whilst leaving open joints in order to create a chiaroscuro effect. A bold contrast is created by a smooth and silky wall made of glaze firing glass panels, showing the quietness, magnificence, low profile and luxury. Similar to a huge stalactite coming from the ceiling, an ebony wall joins this dialogue between walls as if it aims to smooth the stark contrast. In the living area the core point of the projects is the fireplace, which is set between two windows overlooking the Florentine greenery.

It is a horizontal volume, with a rectangular shelf made of stainless steel emerging from the stone walls. Whilst reflecting the images of everything, it looks like changing its inherent function and redefining the usual features of fireplace. These are the best confirmation of Mauro Lipparini's design ideas. Here the floor made of wenge, Chinese chairs from the Ming Dynasty, furniture from the Thirties made by Osvaldo Borsani and lamps from the early 20th century made by Venini, suggest the antique beauty of the space. Furniture and lamps made by Saporiti Itala, Misura Emme, Bonaïdo bring touches of contemporary design and create an ensemble, which is dignified, elegant, romantic and harmonic.

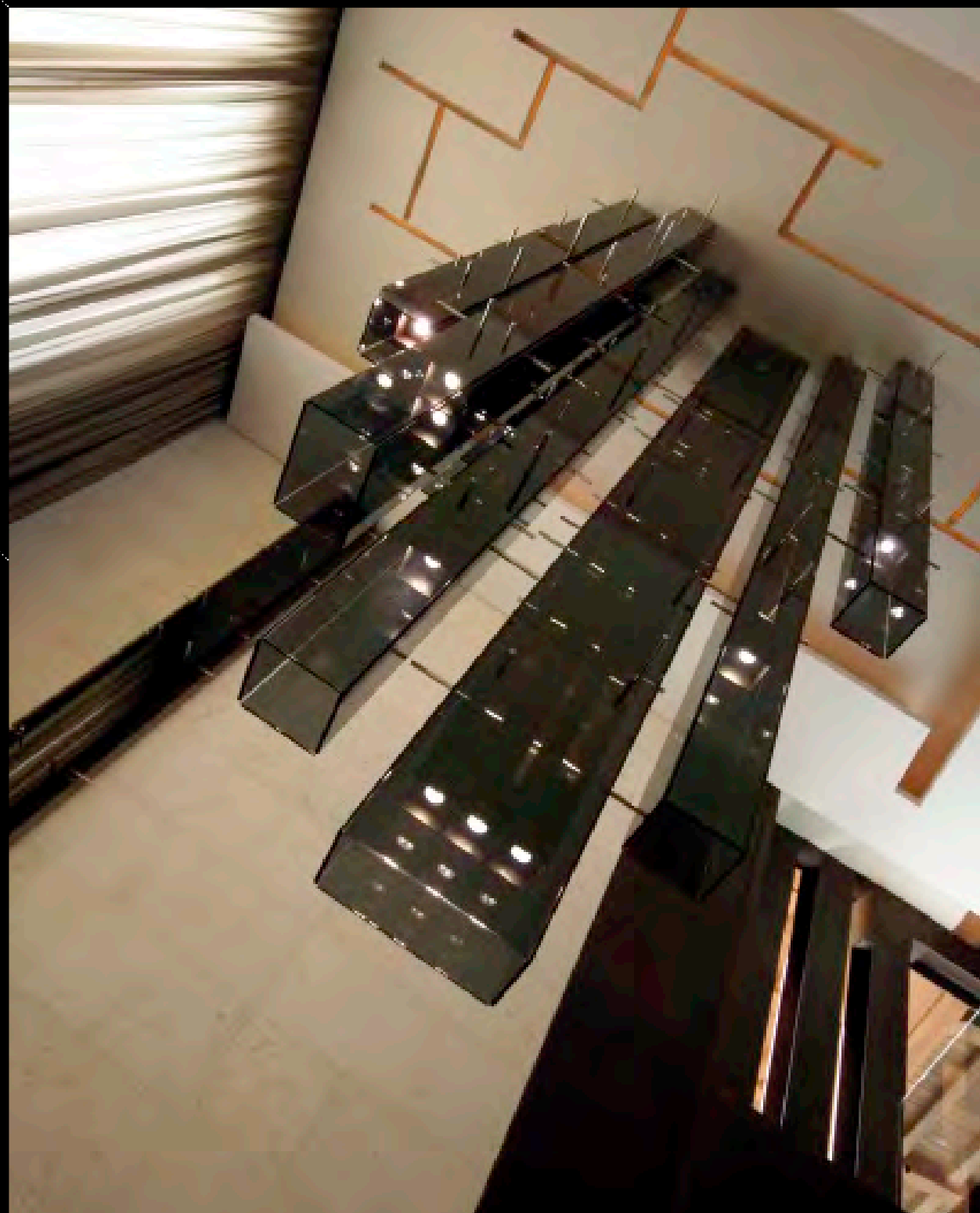




优雅气度 豁达人生 Elegant Bearing, Open-minded Life

项目名称: 阿联酋山居
设计公司:
Lipparini 设计工作室
设计师: 毛罗
面积: 3000m²

Project Name: Emirates Hills
Design Company:
Lipparini Studio
Designer: Mauro Lipparini
Size: 3,000m²



本案如城堡设计, 气质端庄、典雅; 几何量体, 线条坚固、简约, 风格硬朗。大面玻璃墙使空间委婉、别致, 恰当削减量体产生的硬性质感。静坐室内, 坐拥室外自然葱绿。石灰石块的立面形状单一纯洁, 相互交错的格局成就着几何形状的仪式般的气韵。

室内外相融相合, 同样的理念继续书写: 开阔地板、畅通的廊道相互交织的一个令人惊讶的双量体结构, 层高 8 米。各种几何面体汇集在一起, 整个空间立体感极强, 透露出逼人的城堡气质。多功能房间隐私性极强。地下室、一楼、顶层三个原本独立的空间合成一个共同的场域, 占地 3000 多平方米, 气势恢宏。

宽敞的空间铺排着数量不多, 但却精心挑选的摆设。其中许多定制, 如卧室用木质、金属漆板, 起居室、饭厅区使用的可丽耐、玻璃面板。各种材质一一铺陈开去, 映衬着内里石墙, 构成一幅和谐的图案。所有铺陈由本案设计师毛罗亲手设计, 意大利制造。

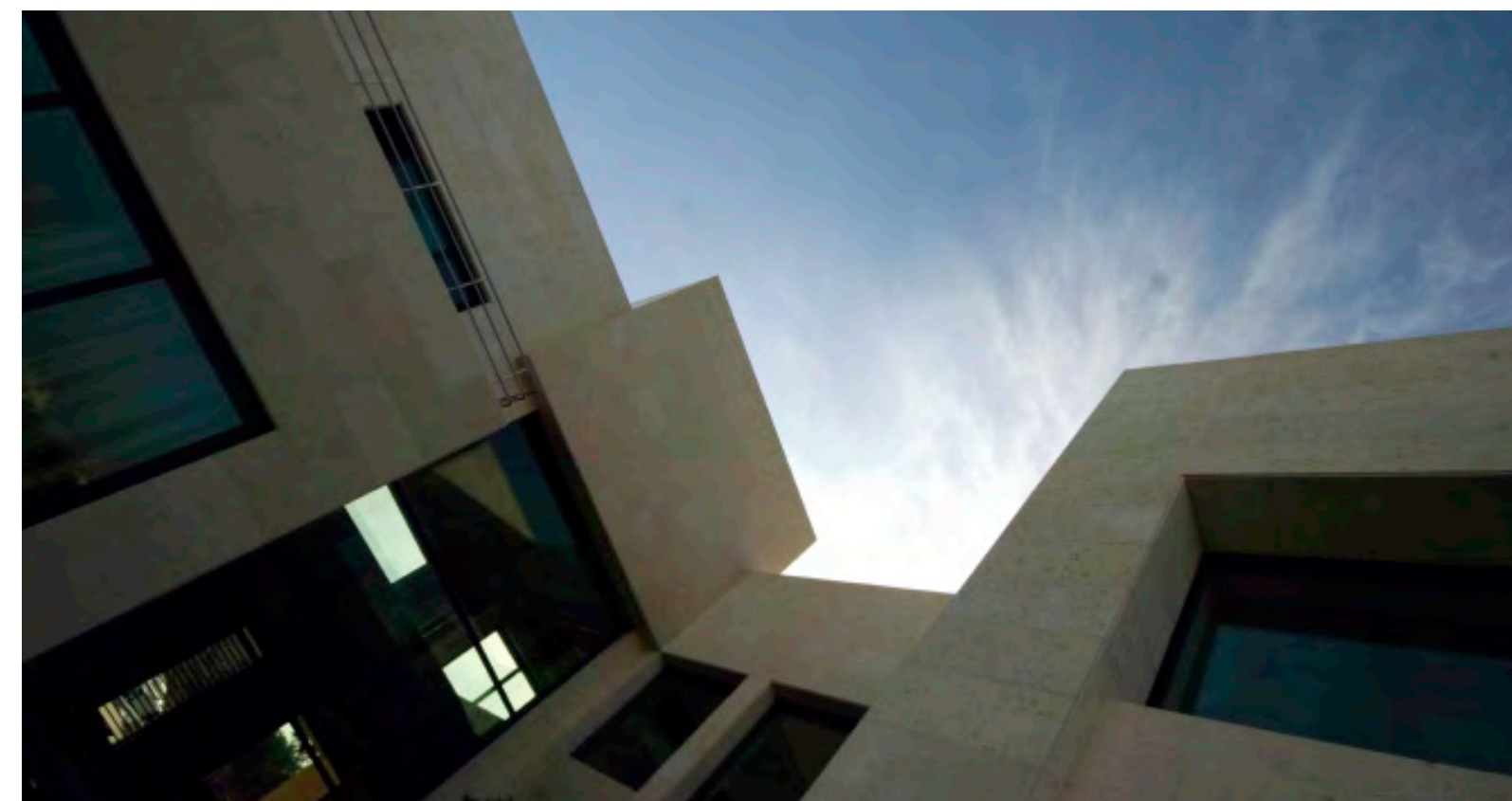
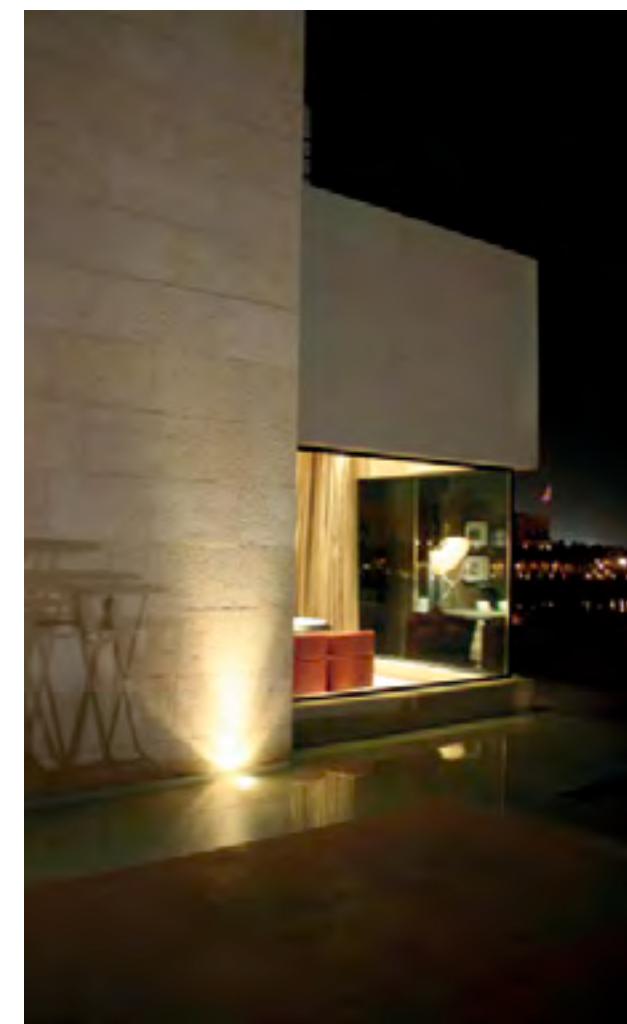
墙壁、天花饰以裂纹, 内以灯光照明。夜晚时分, 光线曼妙, 好一个魔幻般的神奇感觉。餐桌上悬挂巨型吊灯。此乃毛罗设计, 意大利制造。金属质感的毛玻璃工艺, 高达 6 英尺, 正是本案纯粹气质的率性表现。

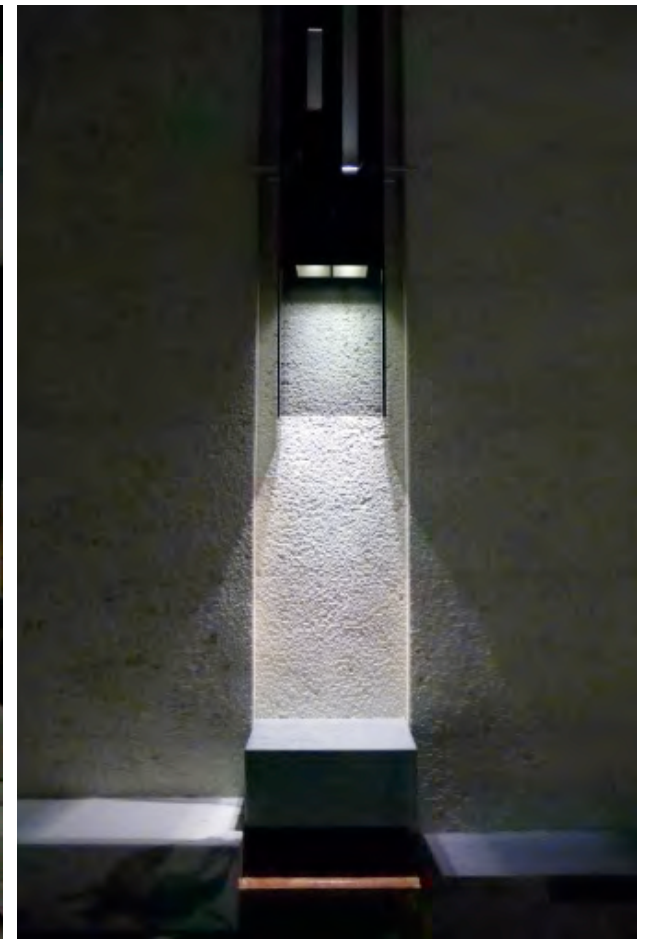
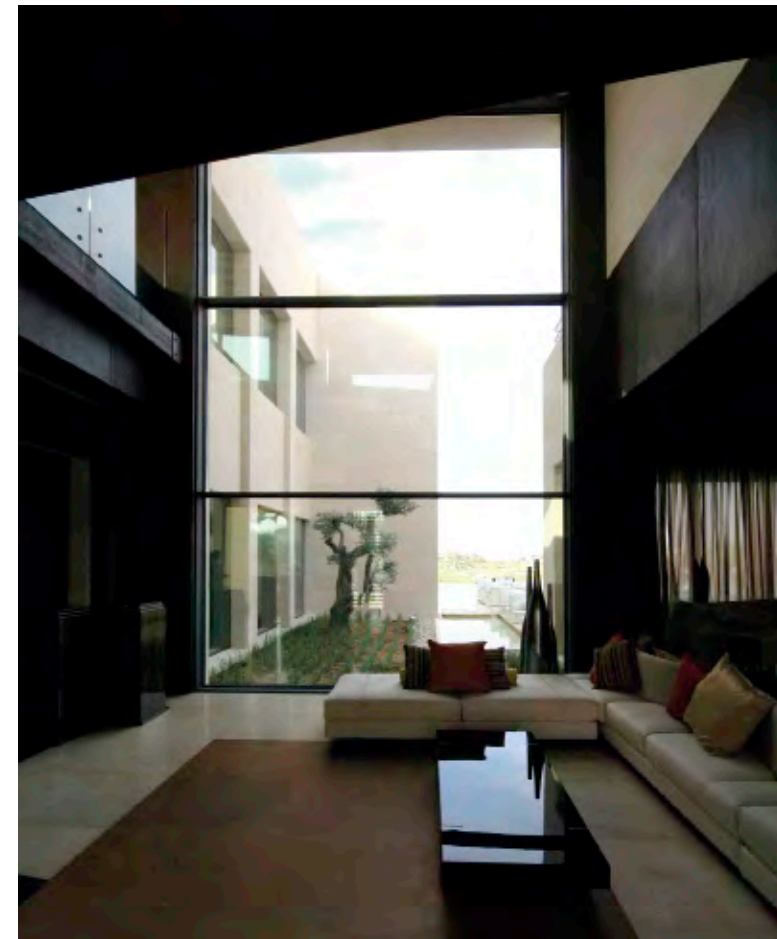
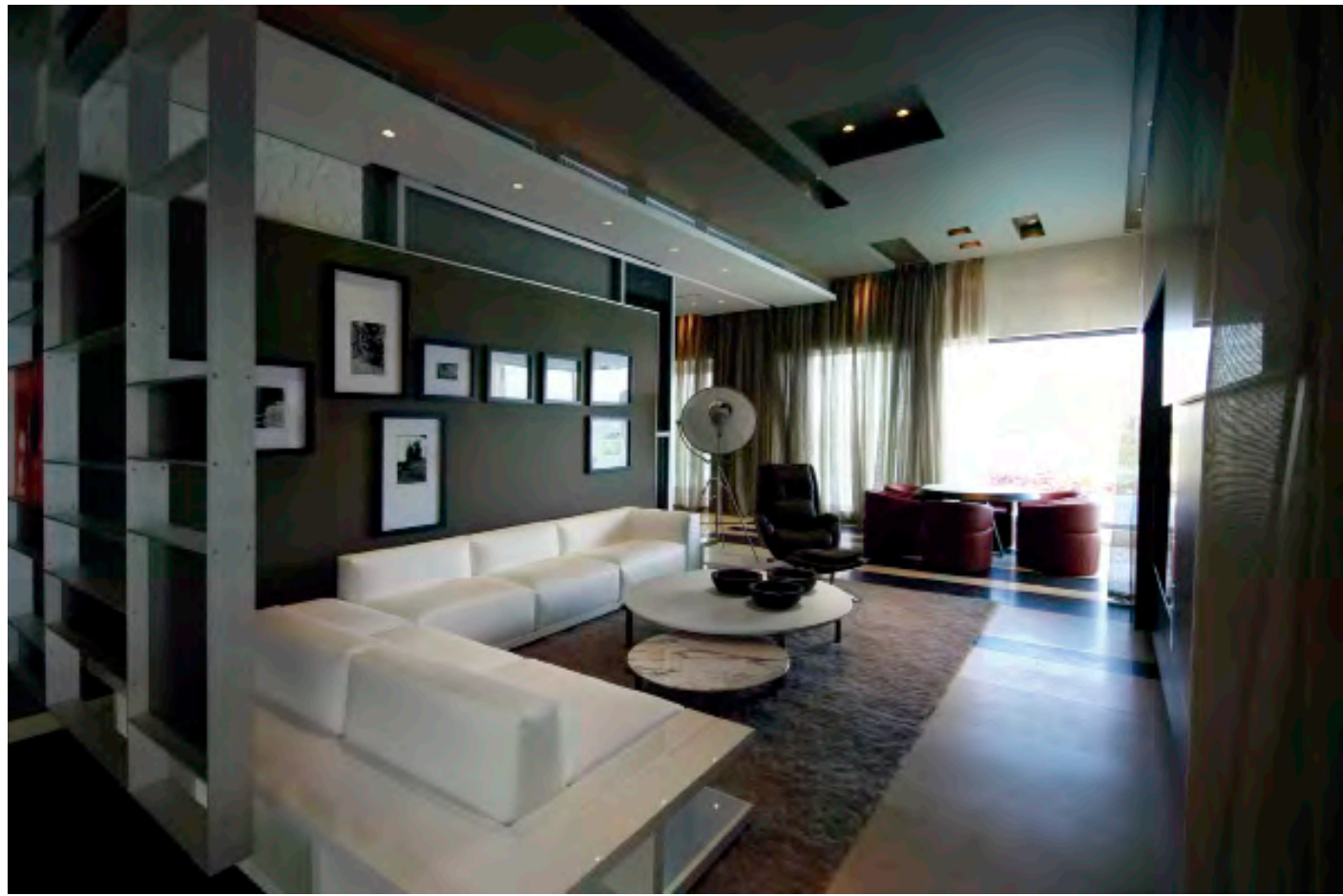
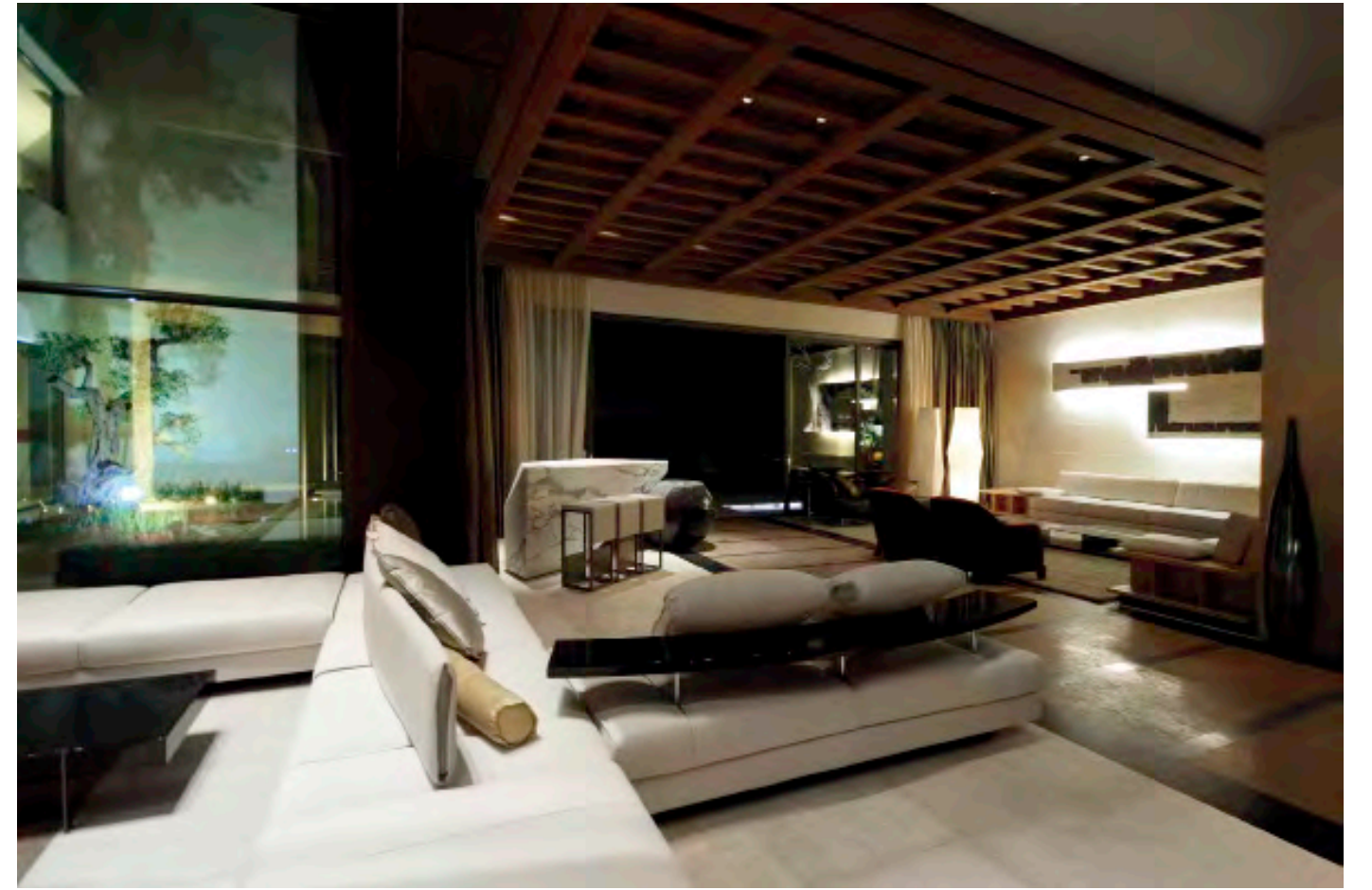
The project has an orientation towards elegant, strong, simple, and evident geometric volumes as if referencing an ancient structure—a fortress. The large glass wall windows counterbalance the protective character of the architectural volumes; through these glass windows, the interiors overlook a vast, natural and green exterior. The villa itself is clad entirely in limestone blocks with an interlocking pattern of monolithic shapes, transferring a sense of pure geometry to the building, evoking something almost ritualistic.

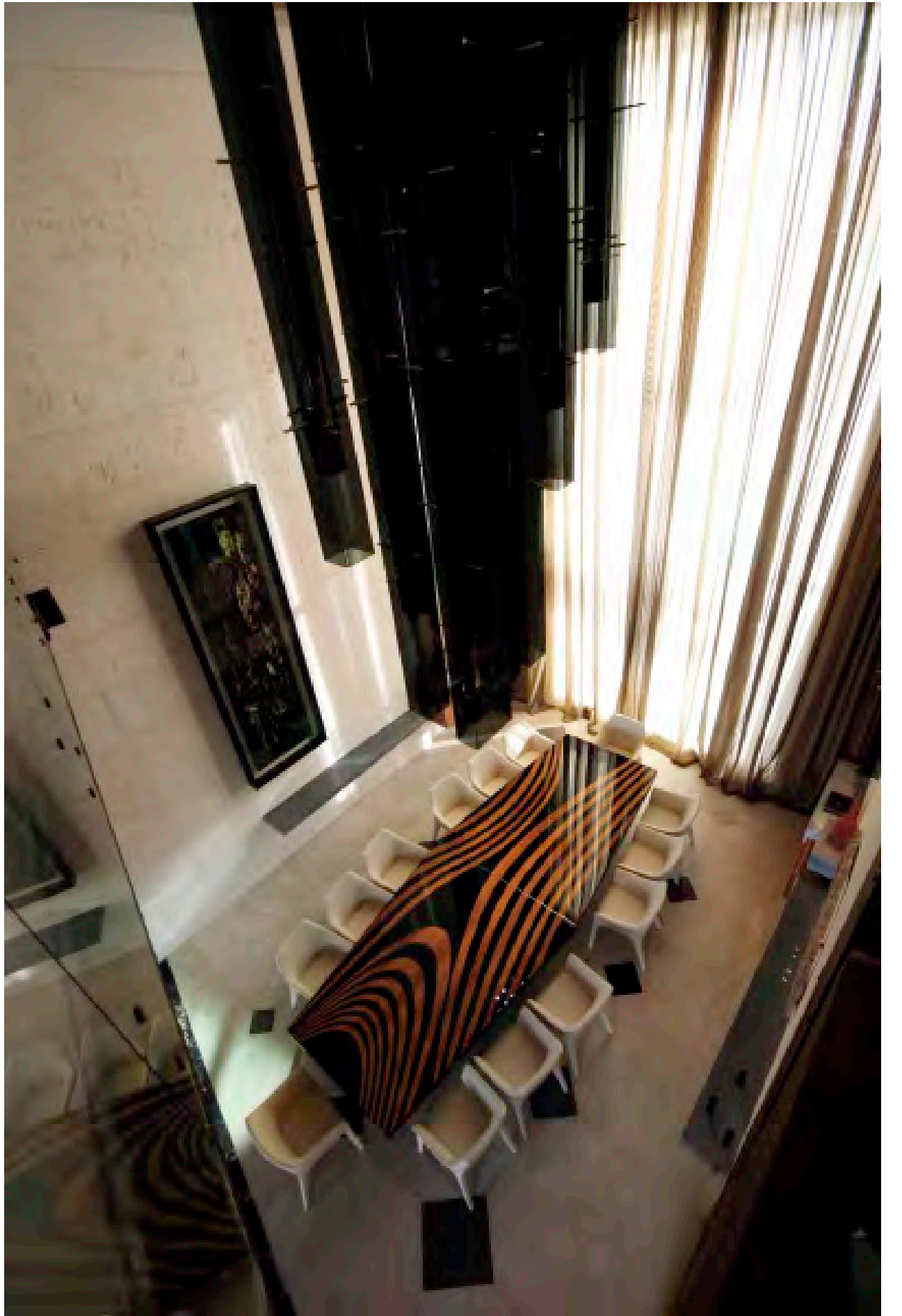
The same philosophy is reflected in the interiors: open floors and passages are woven together with unexpected double volumes, some reaching 8 meters in height. These geometric facets make up a small interior citadel, creating a strong three-dimensional sense of space. With maximum privacy in each room of the villa, it covers a total of 3,000 square meters distributed among the home's three levels: basement, ground and top floors.

The interior surface areas are ample and free, decorated with a few carefully selected pieces of furniture, many of which are custom-made (both wood and metal lacquered wall paneling in the bedroom areas while Corian and glass panels are applied to the living and dining room areas). Together, all of the materials create a harmonious pattern with the interior's stone walls. In addition to the interior design, Mauro Lipparini has also designed all of the custom-made furnishings made exclusively to-order by Saporiti in Italy.

The lighting is gently accentuated by the fissures in both the walls and false ceiling, creating a particularly magical feeling at night. The gigantic chandelier over the dining room table, also designed by Mauro Lipparini and custom-made by Saporiti Italia, is a pure architectural expression: a 6-foot work of art made entirely of metallic-finish ground glass.







隔不断的青山隱隱，遮不住的綠意悠悠
Dark Hills to Snake Away, Green Not to Be
Obscure

项目名称: 台北綠光L宅
主持设计师: 唐忠汉
设计公司:
近境制作设计有限公司
面积: 148m²
主要材料: 石皮、柚木实木、
杉木实木、黑铁

Project Name: L House in
Taipei
Design Company: Da-Interior
Design
Designer: Tang Zhonghan
Size: 148 m²
Materials: Marble, Tea, China
Fir, Black Iron

